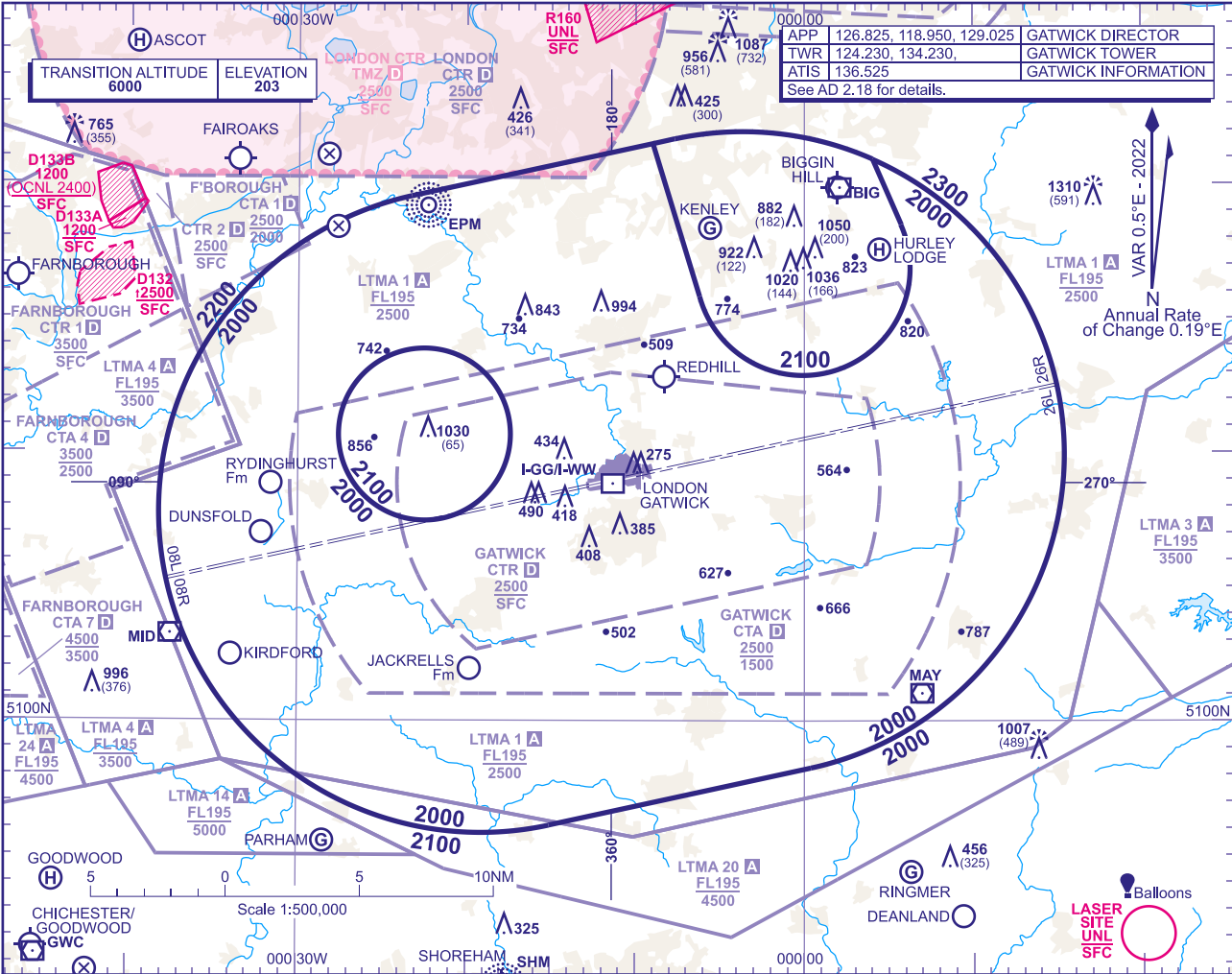


ATC SURVEILLANCE MINIMUM ALTITUDE CHART - ICAO

BEARINGS, TRACKS AND RADIALS ARE MAGNETIC
ELEVATIONS IN FEET AMSL 1310
HEIGHTS IN FEET AGL (591)

LONDON GATWICK



MINIMUM INITIAL ALTITUDE

Within the ATC Surveillance Minimum Altitude area the minimum initial altitude to be allocated by the approach surveillance controller is:

- a) **2000** in the sector defined by the lateral limits: 511931N 0002318W - 512129N 0000900W - 511548N 0000613W thence anticlockwise by an arc of a circle radius 4NM centred on 511651N 000005W to 511829N 0000545E - 512055N 0000403E thence clockwise by an arc of a circle radius 12NM centred on 510957N 0000339W to 505815N 0000023E - 505607N 0001505W thence clockwise by an arc of a circle radius 12NM centred on 510749N 0001910W to 511931N 0002318W.
- b) **2100** in the sector defined by the lateral limits: 512129N 0000900W - 512140N 0000742W thence clockwise by an arc of a circle radius 12NM centred on 510957N 0000339W to 512055N 0000403E - 511829N 0000545E thence clockwise by an arc of a circle radius 4NM centred on 511651N 000005W - 511548N 0000613W - 512129N 0000900W.
- c) **2100** in the sector defined by the lateral limits: a circle centred on 511038.93N 0002230.29W with a radius of 3.2NM.

OUTSIDE THE DESIGNATED ATC SURVEILLANCE MINIMUM ALTITUDE AREA

The minimum altitude to be allocated by the approach surveillance controller will be either the Minimum Sector Altitude, or **1000** above any fixed obstacles:

- a) within 5NM of the aircraft*, and
- b) within the sector 15NM ahead of and within 20° either side of the aircraft's track*.

*When the aircraft is within 15NM of the radar antennae, the 5NM in a) and the 15NM in b) may be reduced to 3NM and 10NM respectively.

LOSS OF COMMUNICATION PROCEDURES

Initial Approach
Continue visually or by means of an appropriate approved final approach aid. If not possible proceed at **3000**, or last assigned level if higher, to **MAY VOR†**.

Intermediate and Final Approach
Continue visually or by means of an appropriate final approach aid. If not possible follow the Missed Approach Procedure to **MAY VOR†**.

†In all cases where the aircraft returns to the holding facility the procedure to be adopted is the Radio Failure Procedure detailed at ENR 1.1.3.4 or the special procedure for the Gatwick Control Zone detailed at EGKK AD 2.22.

GENERAL INFORMATION

- 1. Levels shown are based on QNH.
- 2. Only significant obstacles and dominant spot heights are shown.
- 3. The minimum levels shown within the ATC Surveillance Minimum Altitude Area are in conformance with the Standard European Rules of the Air - SERA.5015.
- 4. Minimum Sector Altitudes are based on obstacles and spot heights within 25NM of the Aerodrome Reference Point.
- 5. Controlled airspace with a base in excess of **5000** or FL55, as appropriate, is not shown.
- 6. The ATC Surveillance service is provided by Primary and/or Secondary Radar equipment.
- 7. **This chart may only be used for cross-checking of altitudes assigned while under ATC Surveillance control.**
- 8. Detailed description of FIR, UIR, CTA and TMA see ENR 2.1.
- 9. Detailed description of ATS airspace organized at the aerodrome see AD 2.17.